

# MONTHLY MEMBERSHIP PROGRESS REPORT

LOCATION MICHIGAN

District 11 C1

Results as of: 5/31/2022

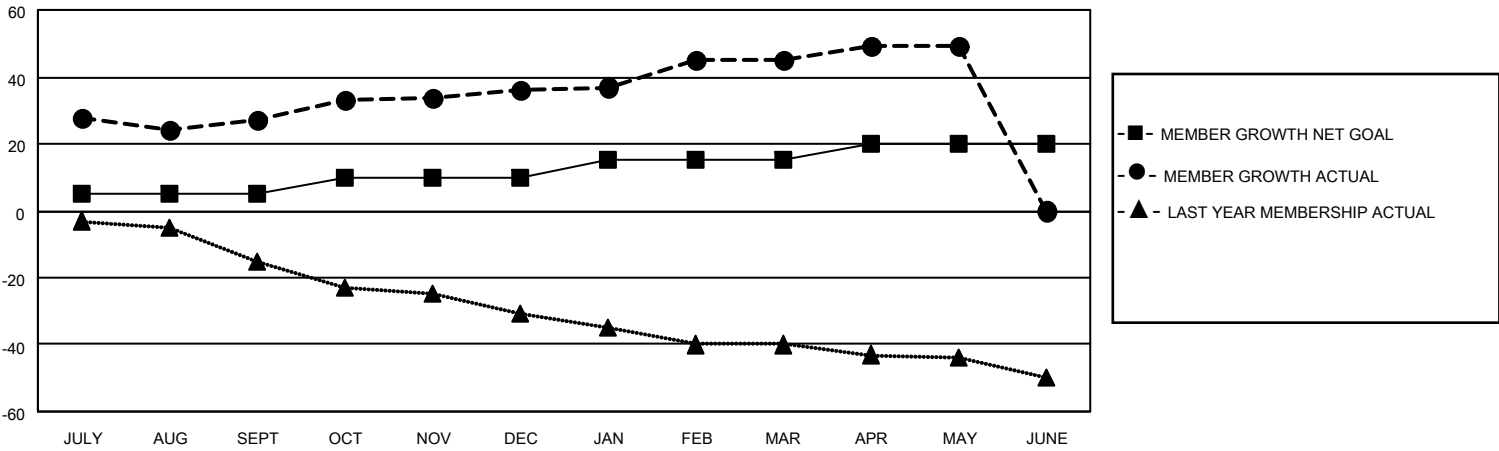
Clubs			
RESULTS FOR 2021-2022			
QUARTER	NEW CLUB GOAL	NEW CLUBS	DROPPED CLUBS
JULY/AUG/SEPT	0	0	0
OCT/NOV/DEC	1	0	0
JAN/FEB/MAR	0	0	0
APR/MAY/JUNE	1	0	0

Members			
RESULTS FOR 2021-2022			
QUARTER	MEMBER GROWTH NET GOAL	MEMBER GROWTH ACTUAL	DROPPED MEMBERS ACTUAL (including transfers)
JULY/AUG/SEPT	5	38	11
OCT/NOV/DEC	5	18	9
JAN/FEB/MAR	5	23	13
APR/MAY/JUNE	5	19	14

**GOALS AND ACTUAL NEW CLUBS CUMULATIVE**



**GOALS AND ACTUAL MEMBERS CUMULATIVE**



**DROPPED CLUBS: 0**

**16 CLUBS OF 29 ADDED 1 OR MORE NEW MEMBERS**

**GENDER DISTRIBUTION**

MALE	489 (65.64%)
FEMALE	256 (34.36%)
NON BINARY	0 (0.00%)
PREFER NOT TO ANSWER	0 (0.00%)

**DROPPED MEMBERS**

DECEASED	6
CLUB CANCELLED	0
OTHER	41
<b>TOTAL</b>	<b>47</b>

[CLICK HERE FOR CUMULATIVE MEMBERSHIP DATA](#)

TOTAL FAMILY UNIT MEMBERS	132
FAMILY MEMBERS PAYING HALF DUES	67